

## AN ENHANCED HOMOGENEITY MEASURE BASED SIGNAL VARIANCE ESTIMATION FOR SPECKLE REMOVAL IN ULTRASOUND IMAGES

<sup>1</sup>NIRMALADEVI PERIYASAMY, <sup>2</sup>ASOKAN RAMASAMY

<sup>1</sup>Department of ECE, Kongu Engineering College, Perundurai, Erode 638052, Tamil Nadu, INDIA

<sup>2</sup>Principal, Kongunadu College of Engineering & Technology, Trichy621 215, Tamil Nadu, INDIA

Email(s): <sup>1</sup>[nimmy\\_kec@yahoo.com](mailto:nimmy_kec@yahoo.com), <sup>2</sup>[asokece@yahoo.com](mailto:asokece@yahoo.com)

### ABSTRACT

Estimation of signal variance in noisy environment is a critical issue in wavelet based image denoising algorithms. As the estimation of signal variance involving all the coefficients in a sub-band is computationally inefficient, an adaptive homogeneity measure based on maximum likelihood approach is used to determine the weighted estimate of the signal variance. This estimation is carried out by exploiting the intra scale and inter scale dependencies that exist among the wavelet coefficients in the same scale and at adjacent scales. A novel inter scale dependency measure is proposed in this paper. This measure is multiplied with the noisy detail subbands. The resulting subband matrix is used for signal estimation. An adaptive thresholding function instead of soft thresholding function with a subband adaptive Bayesian threshold is used. The adaptive thresholding function removes the fixed bias that results from soft thresholding operation between the denoised and original coefficients, thus preserving the original features effectively. Thus the proposed approach improves the denoising performance by using an adaptive threshold estimated via a locally estimated signal variance. Various performance measures are experimentally calculated and compared with several filters.

**Keywords:** *Homogeneity Measure, Inter And Intra Scale Dependencies, Wavelet Thresholding, Speckle Noise, Ultrasound Images*

### 1. INTRODUCTION

Digital images are often affected by noise during acquisition and transmission stages. Speckle is a multiplicative noise and is signal dependent. Mostly this type of granular noise is present in Satellite Aperture Radar (SAR) and medical ultrasound images. As speckle noise degrades the quality of images, diagnostic accuracy may be reduced. Image denoising is an essential preprocessing step. Noise removal in digital images aims to remove the speckle present while preserving the edges and fine details.

Standard speckle filters developed in the past two decades remove noise to a moderate level. They lack either the features preserving property or in reducing the computational time [1]. Later Johnson and Donoho [2] have pioneered Discrete Wavelet Transform (DWT) based denoising scheme by introducing hard and soft thresholding functions. Hard thresholding removes too many wavelet coefficients that might contain useful image information. The lack of translation

invariance in DWT introduces visual artifacts in the reconstructed images. This is overcome by the use of Stationary Wavelet Transform (SWT) which inherently possesses translation invariance characteristics. A critical issue in wavelet based denoising scheme is the statistical estimation of the signal variance in the presence of noise. The signal variance is determined by a local neighborhood window based Maximum Likelihood (ML) or Maximum A Posteriori (MAP) estimate [3] assuming the coefficients are locally independent and identically distributed. But this is inefficient as the size of the neighborhood grows.

The size of locally adaptive window is varied using a region based approach in [4]. It is done based on a homogeneity measure of variances and this method gave a better performance. Recent studies in the literature describe wavelet denoising algorithms based on inter and intra scale dependencies among the wavelet coefficients at various resolution scales [5&6]. The large magnitude coefficients at finer scales have significant parent coefficients at coarser scales,

while the coefficients affected by noise decay rapidly across scales [7]. This inter scale dependency measure along with the arbitrarily shaped locally adaptive window is used for the estimation of signal variance in each subband in the proposed approach. The wavelet coefficients within each subband are modeled as generalized Gaussian distribution (GGD) model. A data driven subband adaptive Bayesian estimate of the threshold is determined using the modeled subband coefficients. As the soft thresholding proposed by Donoho introduces fixed bias between the original and denoised coefficients, a new adaptive thresholding function [8] is used in the proposed approach, in which the coefficients are estimated between  $|W_{j,k}| - \lambda$  and  $|W_{j,k}|$ ,  $W_{j,k}$  is the wavelet coefficient and  $\lambda$  is the threshold. In the proposed approach, a locally adaptive window based signal variance estimation exploiting the intra and inter scale dependencies is utilized in the new adaptive thresholding function to enhance the noise removal capability of wavelet based denoising algorithm in translational invariant domain.

The rest of paper is organized as follows: section 2 details the determination of weighted variance using the estimate of homogeneity measure, section 3 proposes a new inter scale dependency measure section 4 describes the proposed noise removal algorithm using a new adaptive thresholding function and the results and comparison are discussed in section 5.

## 2. PROPOSED METHOD

A noisy image in the wavelet domain is a linear combination of wavelet transform of the original image and noise as represented in equation

$$Y(i, j) = W(i, j) + N(i, j) \quad (1)$$

where  $Y(i, j)$  is the noisy image,  $W(i, j)$  is the noise free image and  $N(i, j)$  is the noise content.

Wavelet denoising performs in the following steps:

- i) Forward wavelet transform
- ii) Estimation of signal and noise variance
- iii) Determination of threshold
- iv) Thresholding the wavelet coefficients
- v) Reconstruction of denoised image using inverse wavelet transform

### 2.1 Proposed Interscale Dependency Measure

When wavelet transform is applied to a signal or image, in the transformed domain, the signal energy is concentrated in few large coefficients and noise energy is seen distributed throughout the coefficients, thus providing a good data

decorrelation. It can be further stated as large magnitude coefficients are signal, while the coefficients with small magnitude are noise. In the wavelet shrinkage scheme, the coefficients may be grouped into significant and insignificant coefficients and are modified accordingly by applying certain rules. The performance of the shrinkage algorithm depends on the selection of threshold, thresholding function and also on the grouping of the coefficients. Selection of threshold and thresholding function has been discussed in the previous sections. The grouping of the coefficients results in two clusters, one classified as region of interest pixels and another cluster as noisy pixels. This approach improves the edge preservation of the reconstructed image as important image features are retained. The proposed clustering is done based on the spatial correlation of the pixels in the adjacent subbands considering the fact that the wavelet coefficients are not only correlated with local neighborhood within a subband but also across the subband in adjacent scales.

In wavelet decomposition the large amplitude coefficients at finer scales have significant parents at coarser scales. But the coefficients affected by noise decay rapidly across scales. Inter and intra scale dependencies have been studied extensively as seen from the literature [11-15]

Here a new measure for determining the inter scale dependency among the wavelet coefficients in adjacent subband is proposed.

$$W_j(m) = 0 \text{ if } W_{j+1}\left(\frac{m}{2}\right) \leq T_l \quad (13)$$

Where  $T_l$  is the threshold defined by

$$T_l = \alpha \hat{\sigma}_n \quad (14)$$

$\hat{\sigma}_n^2$  is the estimated noise variance and  $\alpha$  is experimentally determined as 2. If the coefficient at coarser scale is less than the threshold, it can be considered to be an insignificant coefficient and the corresponding coefficient at its finer scale is made zero. A matrix of values is derived for all the detail subbands of the wavelet decomposition, by applying this dependency measure. This measure along with the intra scale correlation is used in estimating the signal variance.

### 2.2 Estimation Of Signal Variance Using Locally Adaptive Arbitrary Window

Stationary wavelet transform is applied on the input image to decompose it into approximation (LL) and detail coefficients (LH, HL, HH). The

estimation of signal variance is a critical issue in many signal and image processing applications. A locally adaptive arbitrary window based estimation of signal variance is adopted in this paper for the estimation of threshold.

The signal variance is commonly estimated by selecting fixed neighborhood windows using MAP or ML estimate [3]. The ML method of signal variance estimation is given by

$$\sigma_{i,j}^2 = \left( \frac{1}{|n(k)|} \sum_{y_{i,j} \in n(k)} y_{i,j}^2 - \sigma_n^2 \right)_+ \quad (2)$$

Where  $n(k)$  is the neighborhood,  $|n(k)|$  is the cardinality of the neighborhood,  $y_{i,j}$  is the coefficients in the neighborhood and  $\sigma_n^2$  is the noise variance estimated using the robust median estimator as,

$$\sigma_n^2 = \left( \frac{\text{median}\left(|y_{i,j}|\right)}{0.6745} \right)^2 \quad (3)$$

Where  $y_{i,j}$  belongs to the  $HH_1$  sub band. Even though the computational load is low [3], the window size is fixed in ML estimate. The size and shape of the local window used for estimating the signal variance affects the denoising performance. Therefore a locally adaptive neighborhood window[4] is selected for the signal variance estimation to obtain an increased denoised performance. The procedure for arbitrary window selection is narrated below.

The detail coefficients obtained by applying  $L \{= 1, 2, \dots, j\}$  levels of decomposition to the noisy images are subjected to the following operations. A square region  $R$  of size  $9 \times 9$  is considered in the subband  $y(k)$ . This region is then divided into sub regions  $r_{k,0}, r_{k,1}, r_{k,2}, \dots, r_{k,S-1}$ . The sub regions are partitioned in such a way that they are non-overlapping ( $r_{k,i} \cap r_{k,j}; i \neq j$ ) and their union generates the region  $R$  ( $\bigcup_i r_{k,i} = R$ ). The coefficient under consideration  $w_k$  is at the centre of  $r_{k,0}$  and at the centre of  $R$ . The region and their associated sub regions are shown in fig.1.

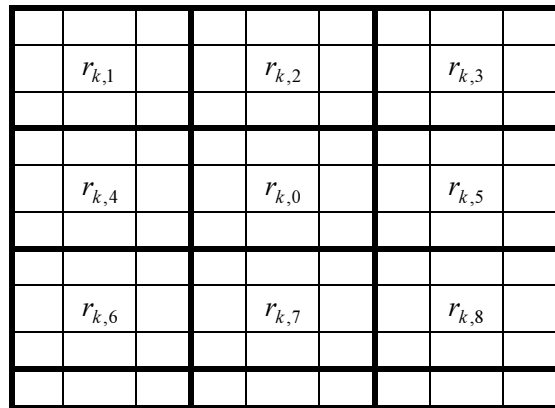


Figure 1: A square region  $R$  ( $9 \times 9$ ) and its sub regions ( $3 \times 3$ ) in a subband

The size of the arbitrary window for estimating the signal variance is then determined by finding a homogeneity measure among the sub regions. Homogeneity measure is defined as the normalized difference of variance between the sub region containing the coefficient under consideration and all the other sub regions in the region  $R$ . Here a region merging procedure is followed, starting from the sub region  $r_{k,0}$ , the region containing the current denoising coefficient, the merging continues until the homogeneity of variance is achieved. The equation for finding homogeneity is given as,

$$h_{k,s} = \frac{|\sigma_{k,s}^2 - \sigma_{k,0}^2|}{\sigma_{k,0}^2}, \quad s = 0, 1, 2, \dots, S-1 \quad (4)$$

Where  $\sigma_{k,s}^2$  is the local variance of the region  $r_{k,s}$ . The local variance of the sub regions are calculated as given in

$$\sigma_{k,s}^2 = \left( \frac{1}{|n(k)|} \sum_{y_{i,j} \in n(k)} y_{i,j}^2 \right) \quad (5)$$

Where  $n(k)$  is the neighborhood,  $|n(k)|$  is the cardinality of the neighborhood and  $y_{i,j}$  is the coefficients in the neighborhood. This homogeneity measure  $h_{k,s}$  is then compared with some specific threshold, to determine the shape of the window. Here a level adaptive threshold is used to determine the homogeneous variance given by,

$$t_k = C.2^{(L-j)}, \quad j = 1, 2, \dots, L \quad (6)$$

C is scaling parameter and is empirically determined to be equal to 0.1 and  $j=0$  is the finest scale of decomposition and  $j-L$  is the coarsest scale of decomposition. If the homogeneity measures of the sub regions are less than the specified threshold then that sub region is included in the window. A binary matrix is defined to indicate whether the variance  $\sigma_{k,s}^2$  is homogeneous with  $\sigma_{k,0}^2$  or not.

$$v_{k,s} = \begin{cases} 1 & h_{k,s} < t_k \\ 0 & \text{otherwise} \end{cases} \quad (7)$$

The sub regions having the binary value 1 are all joined together to get the arbitrary window. Some of the obtained arbitrary shaped windows are given below:

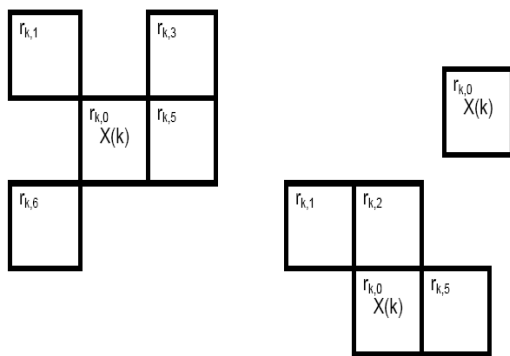


Figure 2: Arbitrary shaped windows obtained in the proposed approach

With the generated arbitrary window, the signal variance is then estimated as,

$$\sigma_x^2 = \left( \frac{\sum_{s=0}^{S-1} \sigma_{k,s}^2 v_{k,s}}{\sum_{s=0}^{S-1} v_{k,s}} - \sigma_n^2 \right)_+ \quad (8)$$

Thus the weighted signal variance is estimated using an arbitrarily shaped window of neighborhoods using homogeneous variance measure.

### 2.3 New Subband Adaptive Threshold

Selection of threshold is another critical issue in wavelet based denoising algorithms. If the threshold selected is too high, important image features are removed. If it is selected too low, then noisy pixels are not completely removed. Hence an optimal selection of threshold is therefore required. The wavelet coefficients can be modeled as GGD

variables. A Bayesian estimate is used for calculating the threshold. The proposed subband adaptive threshold used in this paper is defined as,

$$\lambda_j = \beta_j T_B \quad (9)$$

Where  $\beta_j$  is the subband adaptation parameter given by,

$$\beta_j = \sqrt{\frac{\log M}{2 * 2^j}} \quad (10)$$

Where M is the size of the subband and j is the current level of decomposition. The subband adaptation parameter  $\beta$  proposed here provides a better adaptability to the threshold at various levels of decomposition.

The threshold  $T_B$  is defined as

$$T_B = \begin{cases} \frac{\hat{\sigma}_n^2}{\hat{\sigma}_x^2} & , \hat{\sigma}_n^2 < \hat{\sigma}_x^2 \\ \max(|Y_k|) & , \hat{\sigma}_n^2 \geq \hat{\sigma}_x^2 \end{cases} \quad (11)$$

Where  $\sigma_n^2$  is the noise variance and  $\sigma_x^2$  is the signal variance and  $|Y_k|$  is the absolute value of the wavelet coefficient k in the subband under consideration.

### 2.4 New Adaptive Thresholding Function

The traditional hard and soft thresholding function proposed by Donoho were used in wavelet denoising for the past two decades along with other thresholding functions like semi soft, non- negative garrotte [9&10]. The traditional hard thresholding function kills too many wavelet coefficients, thereby introducing Gibb's artifacts in the output image. The soft thresholding function introduces a fixed bias between the original and the denoised coefficients. Xiaogang Dong et al.,[8] proposed a new adaptive thresholding function to enhance the performance of noise removal by reducing the fixed bias of soft thresholding. The adaptive thresholding function [8] used is given below.

$$\hat{W}_{j,k} = \text{sgn}(W_{j,k}) \left( |W_{j,k}| - \left( 1 - \exp\left( \frac{-m}{|w_{j,k}^2 - \lambda_j^2|} \right) \right) \lambda_j \right) \quad \text{for } |W_{j,k}| \geq \lambda_j$$

$$= 0 \quad \text{for } |W_{j,k}| < \lambda_j \quad (12)$$

Where  $\hat{W}_{j,k}$  is the denoised coefficient,  $W_{j,k}$  is the noisy wavelet coefficient,  $\lambda_j$  is the subband adaptive threshold proposed in this paper as in equation (12) and m is a positive constant. If

$m \rightarrow \infty$  this function approaches the soft thresholding function and if  $m \rightarrow 0$  this function approaches hard thresholding function. By changing the value of  $m$ , effective thresholding function is obtained.

### 2.5 Proposed Denoising Scheme

The stepwise implementation of the above discussed procedure is given below.

Step 1: Decompose the input noisy image to  $L$  levels by applying stationary wavelet transform.

Step 2: Compute the noise variance using Equation 3

Step 3: Compute the inter scale dependency measure for each of the detail subbands LH, HL and HH at all levels using Equations(13) & (14)

Step 4: Multiply each of the detail subbands at all levels by the corresponding measure computed in Step 3.

Step 5: Compute the measure of homogeneity using Equations (4) to (7)

Step 6: Estimate the signal variance as in Equation (8)

Step 7: Compute the threshold using Equations (9) to (11)

Step 8: Apply the adaptive thresholding function to estimate the noise free coefficients using Equation (12)

Step 9: Take inverse wavelet transform to reconstruct the image

### 3. RESULTS

The performance of the proposed algorithm was verified using various performance metrics like, Peak Signal to Noise Ratio (PSNR), Mean Square error (MSE), Equivalent Number of Looks (ENL), Structural Similarity Index Measure (SSIM) and Edge Preservation Index (EPI).

Clinical Ultrasound images were used for testing the proposed algorithm. Ultrasound images used in this experiment were obtained from Edapal Hospital, Kerala. The size of the images are 512 x 512 and are shown in figure 3 and figure 4. The performance of the proposed system is compared with standard speckle filters like, Frost, Kuan and Lee Filters, DWT based filter using Bayes threshold, Shift invariant filter using SWT and adaptive shrinkage technique in [8].



Figure 3: Input Ultrasound image1



Figure 4: Input Ultrasound image2

MATLAB simulations were carried out for different noise variances like 0.01, 0.04, 0.08 and 0.1.

Figure 5 shows the performance comparison of PSNR and MSE for ultrasound image2 with existing approaches.

The algorithm was tested with different wavelet basis and is tabulated in table 3.

Table 1: Performance Comparison For Various Wavelets for Image 1 For Noise Variance 0.01

	db4	bior1.1	dmey	sym2	coief2
PSNR	41.8515	37.7204	39.5297	44.0661	<b>49.2271</b>
MSE	4.2455	10.9910	7.2461	2.5496	<b>0.7782</b>
SSIM	<b>0.9848</b>	0.2818	0.3506	0.4500	0.6970
ENL	1.7114	1.8556	1.7741	1.7931	1.7788
EPI	<b>0.5766</b>	0.0503	0.1540	0.0566	0.2618

Comparisons have been made with various wavelet basis functions like Coiflet, Daubechies, Symlets, Biorthogonal wavelets, Discrete approximation of Meyer wavelets in the proposed filter and the results are given in table 1. Table 2 gives the results of the proposed approach for different noise variances using db4 wavelet.

Table 2: Comparison of PSNR for various Noise variances and Filters for Ultrasound Image 1



$\sigma^2$	Metrics	Noisy	Frost	Kaun	Lee	DWT Filter	SI-Shrink	Adaptive shrink	Proposed Filter
0.01	PSNR	34.9435	38.6438	39.8387	39.7923	36.2507	36.2908	40.4068	<b>41.8515</b>
	MSE	20.8321	8.8859	6.7485	6.8211	15.4175	15.2751	5.9210	<b>4.2455</b>
	SSIM	0.9663	0.9804	0.9819	0.9820	0.9666	0.9712	0.9822	<b>0.9848</b>
	ENL	1.6661	1.7021	1.6975	1.6994	1.6419	1.6665	1.7094	<b>1.7114</b>
	EPI	0.3274	0.2622	0.2244	0.2213	0.3486	0.0682	0.5470	<b>0.5766</b>
0.04	PSNR	31.4191	34.0636	35.5479	35.5193	33.1247	32.4558	36.0805	<b>38.4214</b>
	MSE	46.8998	25.5104	18.1254	18.2455	31.6673	36.9405	16.0335	<b>9.3528</b>
	SSIM	0.8882	0.9451	0.9512	0.9515	0.9135	0.9035	0.9461	<b>0.9608</b>
	ENL	1.5483	1.6716	1.6844	1.6848	1.5643	1.5484	1.6865	<b>1.7125</b>
	EPI	0.1722	0.1552	0.1646	0.1628	0.1759	0.0379	0.2837	<b>0.4285</b>
0.08	PSNR	30.4078	31.8946	32.9930	32.8841	32.0909	31.2720	34.4780	<b>36.4853</b>
	MSE	59.1965	42.0362	32.6425	33.4712	40.1782	48.5158	23.1889	<b>14.6068</b>
	SSIM	0.8104	0.9023	0.9145	0.9124	0.8559	0.8365	0.9068	<b>0.9346</b>
	ENL	1.4127	1.6304	1.6648	1.6636	1.4767	1.4161	1.6631	<b>1.7081</b>
	EPI	0.1239	0.1085	0.1312	0.1262	0.1221	0.0284	0.1966	<b>0.3598</b>
0.1	PSNR	30.1131	31.2677	32.0888	32.0758	31.7935	30.9448	34.0053	<b>35.7670</b>
	MSE	63.3536	48.5639	40.1979	40.3180	43.0259	52.3121	25.8553	<b>17.2337</b>
	SSIM	0.7815	0.8798	0.8944	0.8938	0.8311	0.8112	0.8913	<b>0.9210</b>
	ENL	1.3606	1.6065	1.6564	1.6593	1.4347	1.3626	1.6495	<b>1.7013</b>
	EPI	0.1114	0.0974	0.1100	0.1121	0.1072	0.0242	0.1763	<b>0.3308</b>

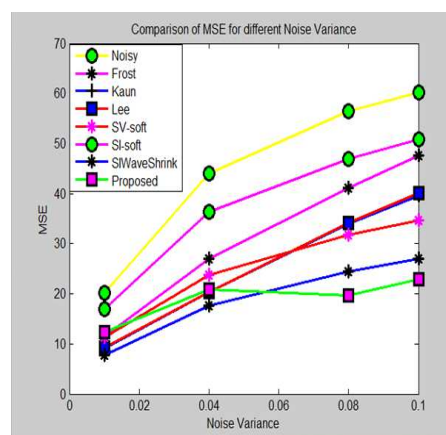
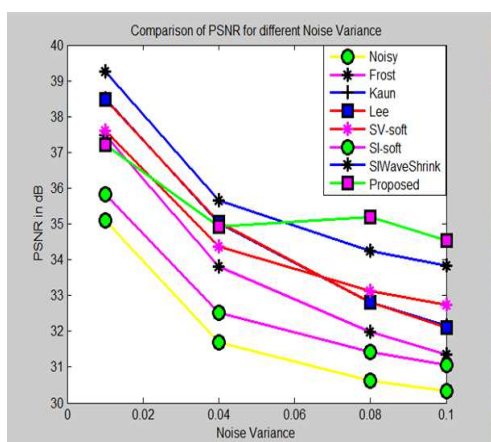


Figure 5: PSNR And MSE Comparison For Ultrasound Image 2

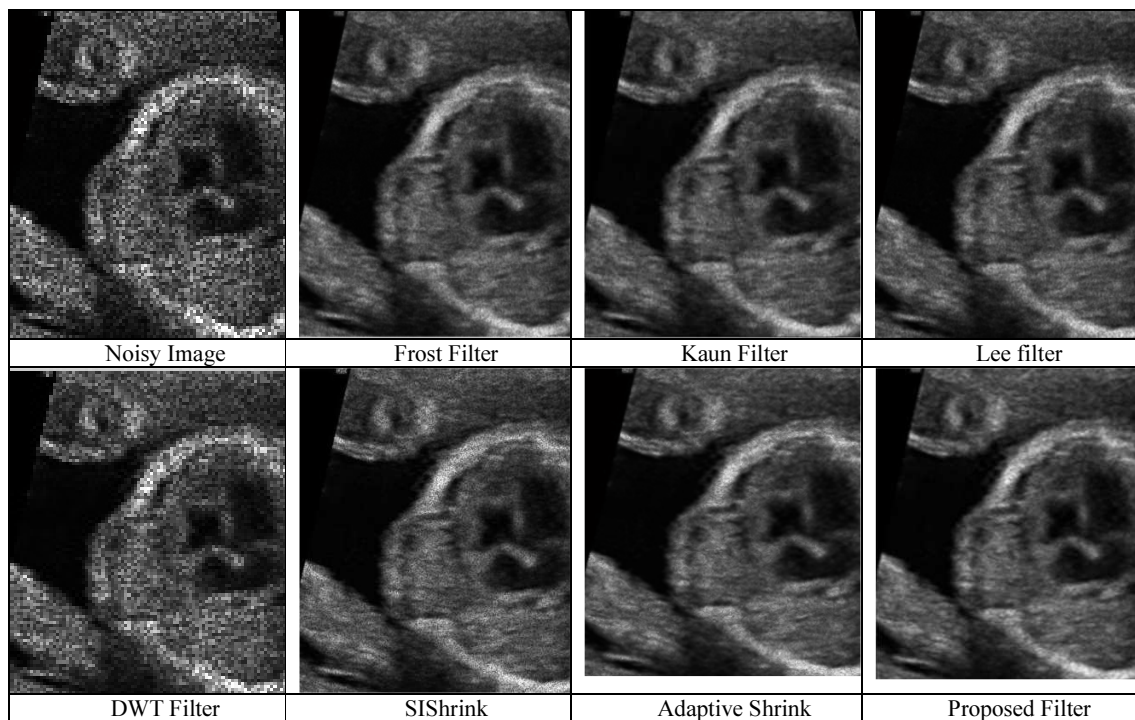


Figure 6: Visual Performance Comparison of The Proposed Filter With Different Filters

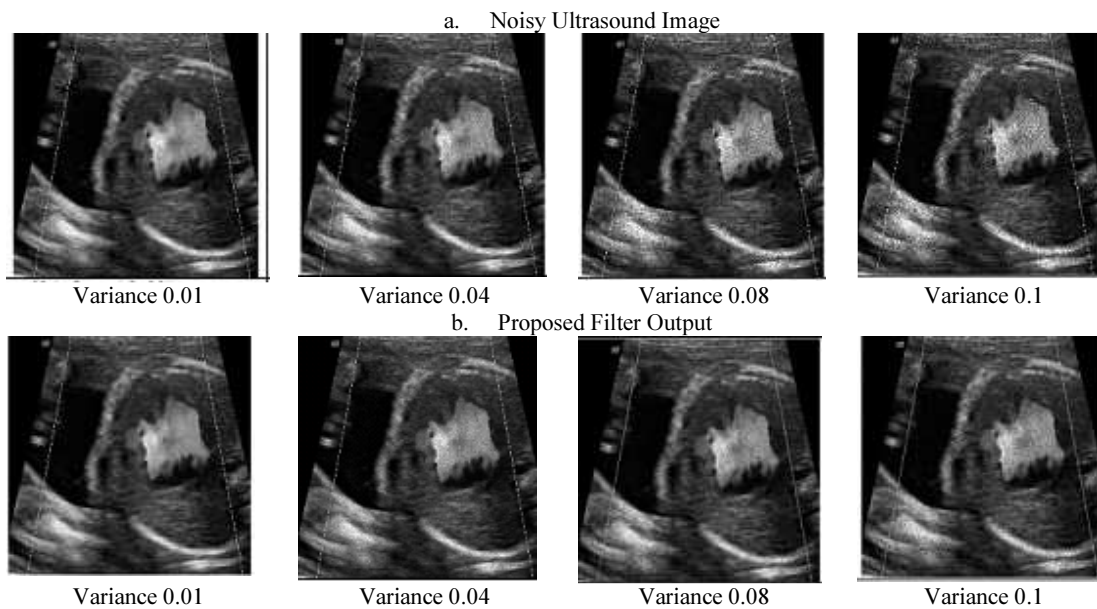


Figure 7: Visual Quality Improvement Using Proposed Filter for Various Noise Variances

. Visual quality of the reconstructed images are compared and given in figure 6 and figure 7.

#### 4. DISCUSSION

From Table 1 it is seen that Coiflet gives high PSNR. But comparing the other performance indices like SSIM and EPI, db4 gives better result. The results generated in this experiment using dB4 are tabulated in Table 2. From the results, the spatial domain filters like Frost, Kaun and Lee are good in removing speckle noise but lag in preserving the edges. The wavelet based filters can reduce speckles and increase PSNR while preserving fine details of the image. The subband adaptive filters reduce speckle and preserves the fine details as EPI is seen to be improved from Table 2. The performance analysis shows that on an average, PSNR is increased by 2.89%, MSE is reduced by 34%, SSIM is increased by 1.53%, ENL is increased by 2.53% and EPI is increased by 30% for the proposed Shift invariant modified adaptive wavelet shrinkage technique when compared with the existing SIWaveShrink technique [8]. From figure 6 & 7 it is seen that the visual quality of the images is significantly improved for the proposed denoising approach.

#### 5. CONCLUSION

Thus the proposed approach yields an improved performance compared to the existing approaches. The selection of undecimated wavelet transform with the proposed subband adaptive threshold has increased the noise reduction ability of the filter. The estimation of weighted signal variance through a locally adaptive arbitrary window using homogeneity measure thus increases the PSNR value, as the arbitrary window gives a more accurate local statistics of the image compared to a local window. The proposed inter scale measure, helps to retain the important image features, and hence the edges and fine details are well preserved as seen from the results. Thus proposed filter performs comparatively better in terms of PSNR, preservation of edges and in visual quality.

#### REFERENCES

- [1] Sudha.S, Suresh.G.R, Sukanesh.R, "Comparative study on Speckle Noise suppression techniques for Ultrasound Images". *International Journal of Engineering and Technology*, Vol.1, No.5, 2009.
- [2] David L Donoho, "De-noising by soft thresholding", *IEEE Transactions on Information Theory*, Vol.41, No.3, 1995, pp:613-627.
- [3] M. K. Mihcak, I. Kozintsev, and K. Ramchandran, "Spatially adaptive statistical modeling of wavelet image coefficients and its application to denoising", *Proc. IEEE Int. Conf. Acoustics, Speech, Signal Processing*, No. 6, 1999, pp:3253-3256
- [4] Il KyuEom and Yoo Shin Kim, "Wavelet-Based Denoising With Nearly Arbitrarily Shaped Windows", *IEEE Signal Processing Letters*, Vol.11, No.12, 2004, pp:937-940
- [5] Lei Zhanga, Paul Baob, XiaolinWuc, "Hybrid inter- and intra-wavelet scale image restoration", *Pattern Recognition*, No. 36, 2003,pp:1737 – 1746
- [6] Levent Sendur, and Ivan W. Selesnick, "Bivariate Shrinkage Functions for Wavelet-Based Denoising Exploiting Interscale Dependency", *IEEE Transactions On Signal Processing*, Vol.50, No.11, 2002, pp:2744-2756
- [7] U. D. Dwivedi, and S. N. Singh, "Enhanced Detection of Power-Quality Events Using Intra and Interscale Dependencies of Wavelet Coefficients", *IEEE Transactions On Power Delivery*, Vol.25, No.1, 2010
- [8] Xiwen Qin , Yang Yue, Xiaogang Dong, Xinmin Wang , ZhanSheng Tao, "An Improved Method of Image Denoising Based on Wavelet Transform", *International Conference on Computer, Mechatronics, Control and Electronic Engineering (CMCE) 24-26 Aug. 2010* doi: 10.1109/CMCE.2010.5610029
- [9] Hong-Ye Gao and Andrew G. Bruce, "Waveshrink With Firm Shrinkage", *Statistica Sinica*, No. , 1997, pp7: 855-874
- [10] Hong-Ye Gao, "Wavelet Shrinkage Denoising using the Non negative garrotte", *Journal of Computational and Graphical Statistics* Vol.7, No.4, 1998, pp:469-488
- [11] Alexandra Pizurica, Wilfried Philips, Ignace Lemahieu and Marc Acheroy, "Despeckling SAR Images Using Wavelets and A New Class Of Adaptive Shrinkage Estimators", *Proceedings. International Conference on Image Processing*, 7-10 Oct 2001. No. 2, pp:233-236, 2001, doi:10.1109/ICIP.2001.958467
- [12] Paul Bao and Lei Zhang, "Noise Reduction for Magnetic Resonance Images via Adaptive Multiscale Products Thresholding", *IEEE Transactions On Medical Imaging*, Vol.22, No.9, 200, pp:1089 – 1099
- [13] Meena Srinivasan, S. Chris Prema and S. Anna Durai, "Improved MAP Estimation of Variance Through Arbitrary Windows For Wavelet Denoising", *IEEE Indicon 2005 Conference*,





- 11-13 Dec. 2005 doi:  
10.1109/INDCON.2005.1590117
- [14] S. Grace Chang, Bin Yu, and Martin Vetterli, "Spatially Adaptive Wavelet Thresholding with Context Modeling for Image Denoising", *IEEE Transactions On Image Processing*, Vol.9, No. 9, 2000, pp: 1522 - 1531
- [15] Yan Chen, Ruming Yin, Patrick Flynn, Shira Broschat, "Aggressive region growing for speckle reduction in ultrasound images", *Pattern Recognition Letters*, No.24, 2003, pp: 677-691